

# 1700 Landmark Rd

Aurora, IL 60506

+/- 22,200 SQFT

\$9.00 PSF Net

\$1.59 PSF Estimate CAM

\$0.91 PSF Property Tax

**CORCORAN**  
COMMERCIAL REAL ESTATE

Owned & Managed By:

**CH** CLEAR HEIGHT  
PROPERTIES



FOR LEASE



## PROPERTY INFORMATION:

- 1.5 Miles from Route 88
- 14-17' Clear Ceiling Height
- Two (2) - 10' Drive In Doors
- Interior Loading Dock with Leveler
- Power—3 Phase 800 AMP
- 120/240 High Leg Delta System
- Updated Office Space

## CONTACT INFORMATION:

Phil Smith

Ryan Samuelson

630.862.5944

630.674.8424

phil@ccreil.com

sammy@ccreil.com



# 1700 Landmark Rd

Aurora, IL 60506

+/- 22,200 SQFT

\$9.00 PSF Net

\$1.59 PSF Estimate CAM

\$0.91 PSF Property Tax

**CORCORAN**  
COMMERCIAL REAL ESTATE

Owned & Managed By:

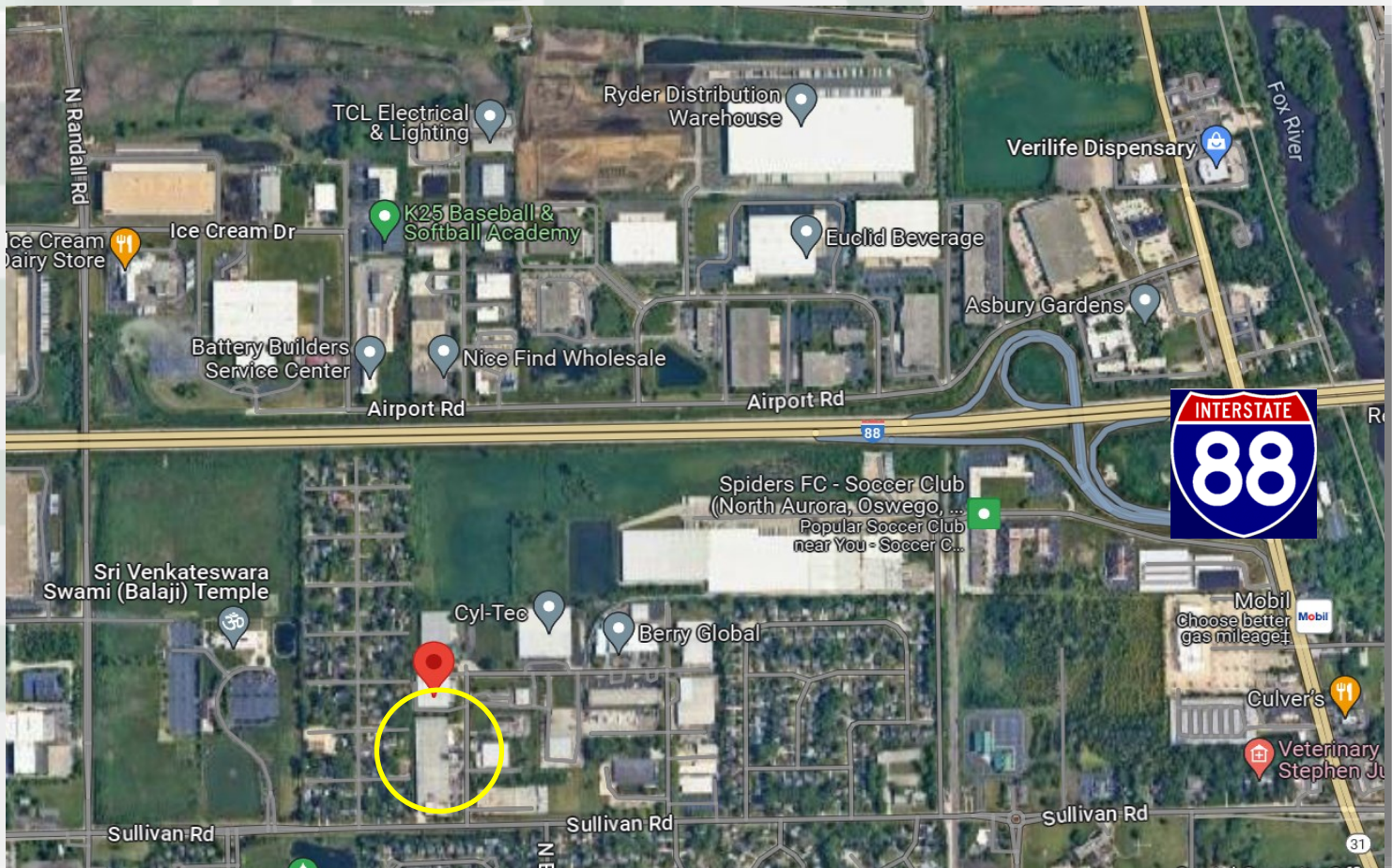
**CH CLEAR HEIGHT**  
PROPERTIES



FOR LEASE

## UNIT DETAILS

- Fenced, secured outdoor storage
- Reception Area with restroom
- Breakroom
- Conference Room
- Warehouse Breakroom & Restrooms
- Abundant Parking



# 1700 Landmark Rd

Aurora, IL 60506

+/- 22,200 SQFT

\$9.00 PSF Net

\$1.59 PSF Estimate CAM

\$0.91 PSF Property Tax

**CORCORAN**  
COMMERCIAL REAL ESTATE

Owned & Managed By:

**CH CLEAR HEIGHT**  
PROPERTIES



FOR LEASE

